

SOCIAL POLICY AND INJURY PREVENTION

→ HOW YOU CAN INFLUENCE CHANGE ←



social policy:

the range of supports (e.g. programs, benefits, legislation) that work to protect people through various life changes that can affect their health and quality of life.



age-friendly community grants

family housing programs



property tax rebates

What Social Policies Exist in Atlantic Canada?



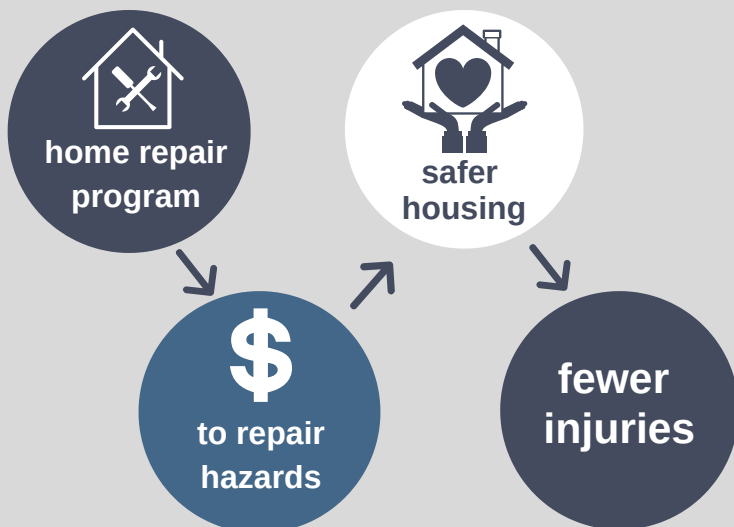
home repair program

child benefit & childcare subsidy



homecare programs

How does social policy impact injury prevention? **An example:**



HOW CAN YOU INFLUENCE?

- Inform** ✓ share on social media
- Promote** ✓ be a media spokesperson
- Collaborate** ✓ participate on a committee
- Involve** ✓ provide research or data
- Support** ✓ develop resources
- ✓ help families access social policy
- ✓ write a position statement

We all have a role. What is yours?

Visit

<https://bit.ly/3t7mz8y>